

What's new in the GISBOOST® service

With the latest upgrade to the GISBOOST® service there are new features as well as changes to some existing functionalities.

The areas where there have been changes are;

Information	1
Searches	1
Selection List	1
Advanced Tools	2
Map Content	2
Coordinates	2

Information

Base information coverage now extends to just beyond the Taranaki regional boundary. The intention is to extend all non council datasets to cover this area. This relates to the cadastral datasets i.e. parcels, roads, statutory action and estate information.

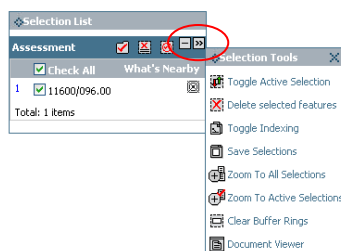
Searches

Road Name Search: With the extended area this search will now return more road name results. It is recommended to include a locality when searching for road names.

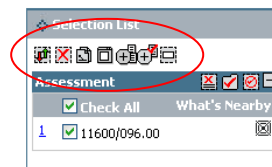
Selection List

The selection list dialogue box now displays with more information. To see the selection tools you now click on the button in the upper right corner of the selection list window as indicated on image below.

Now:

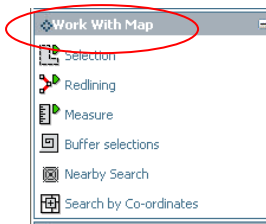


Previously:



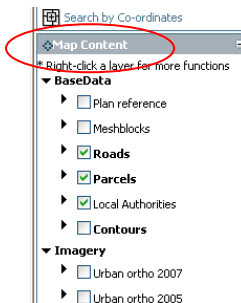
Advanced Tools

The 'Advanced Tools' section has been renamed to 'Work With Map'. Some of these tools have been changed:



Map Content

The 'Layer Manager' section has been renamed to 'Map Content'.



Coordinates

Coordinates now display for the cursor location.

